

ROUGH GUIDES

Exporting coordinates at a regular interval

**LSS<sup>TM</sup>**

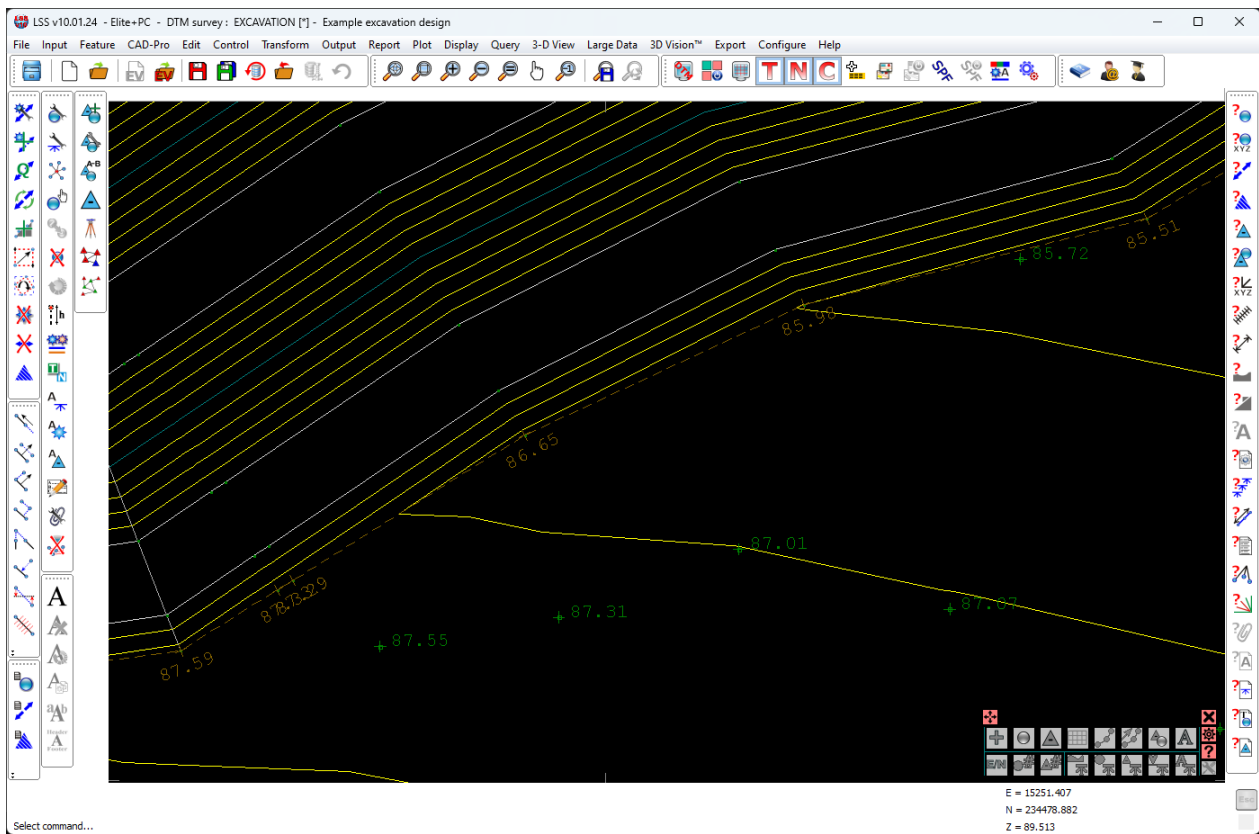
# Introduction

This Rough Guide will explain how to export a set of points at a regular interval along a link or user-defined line in a survey.

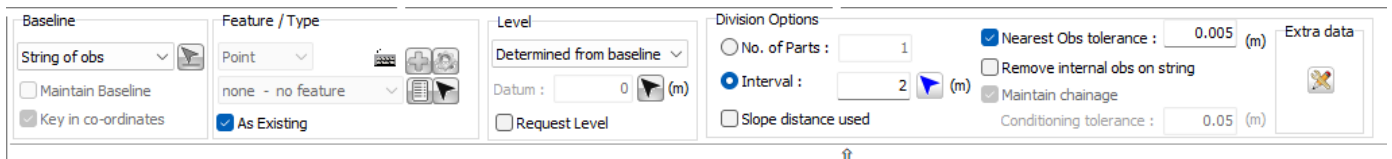
## Method 1

Inserting points at a regular interval, then outputting to a new survey.

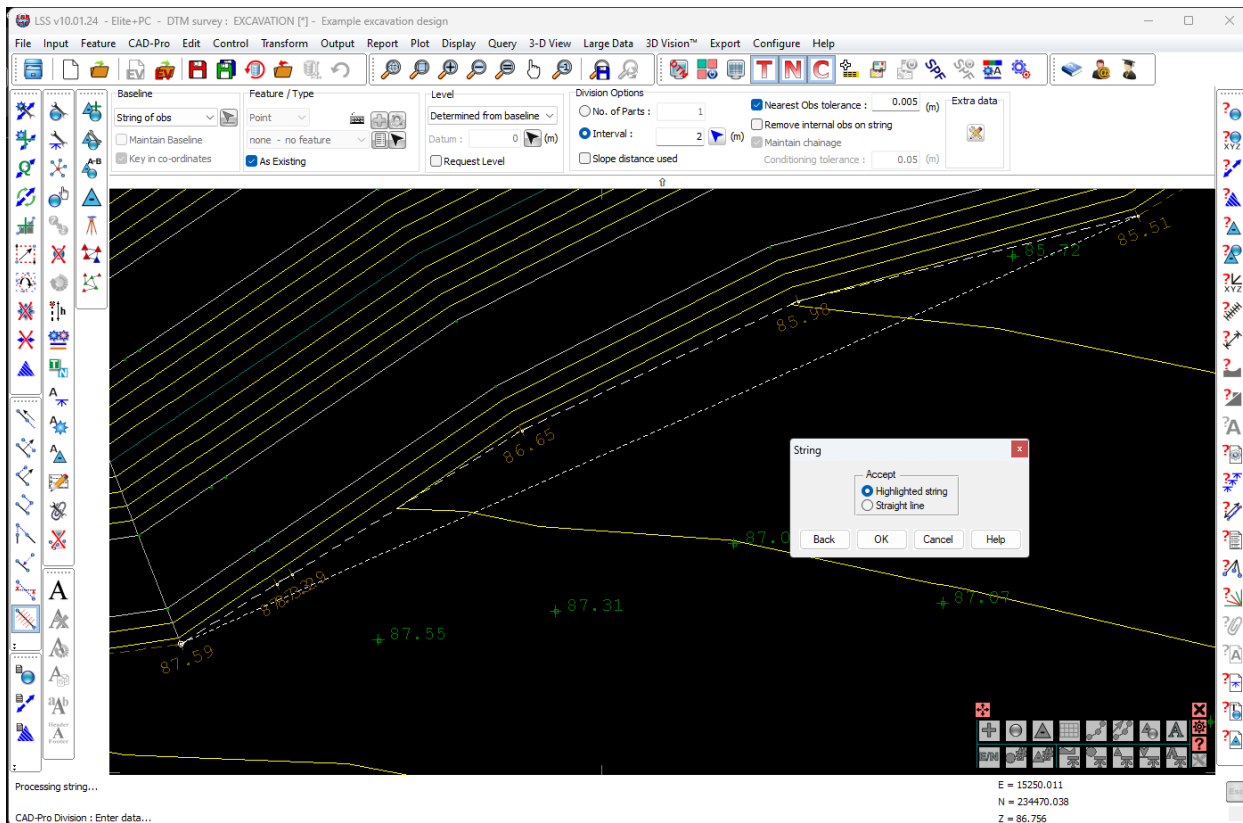
Start by opening up the survey...



Now we need to select the command “CAD-Pro / Division”.

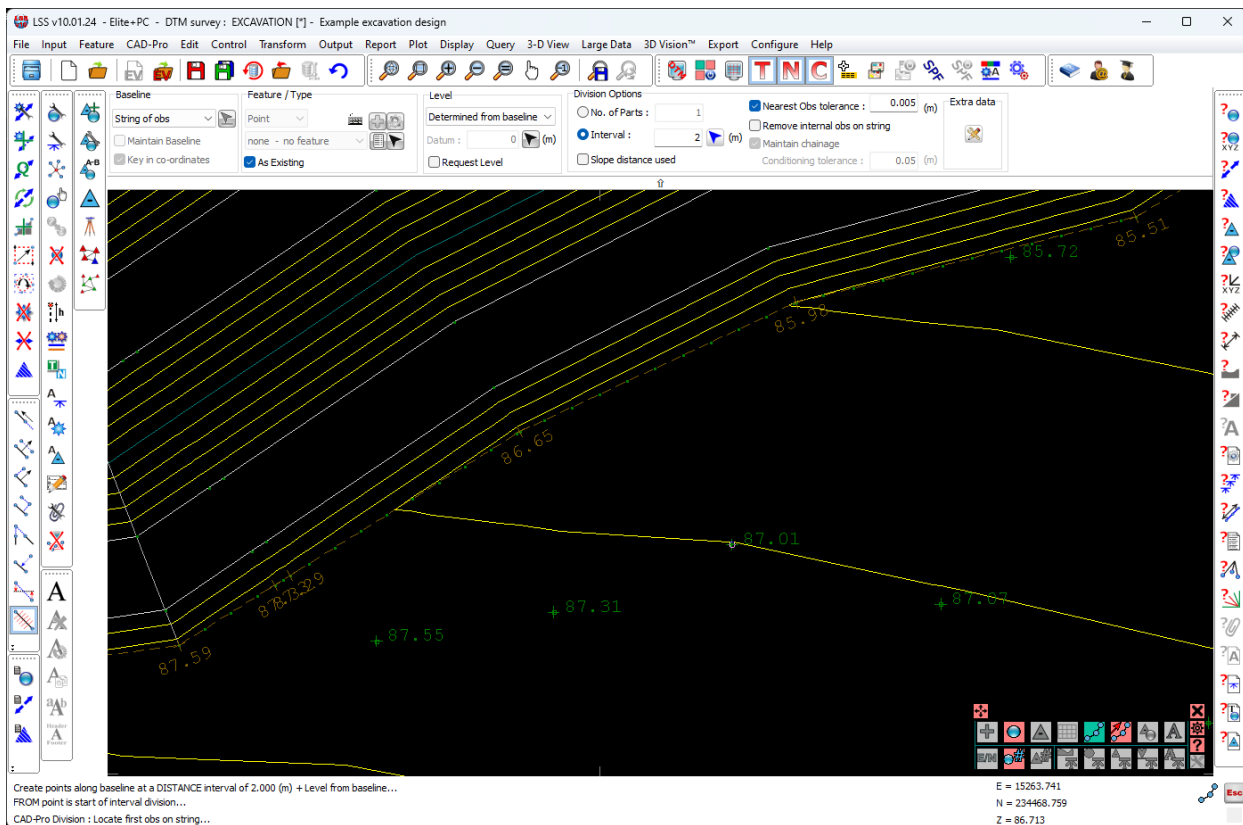


We need to set the baseline to be “String of obs” and for this example set the Interval to be 2m.

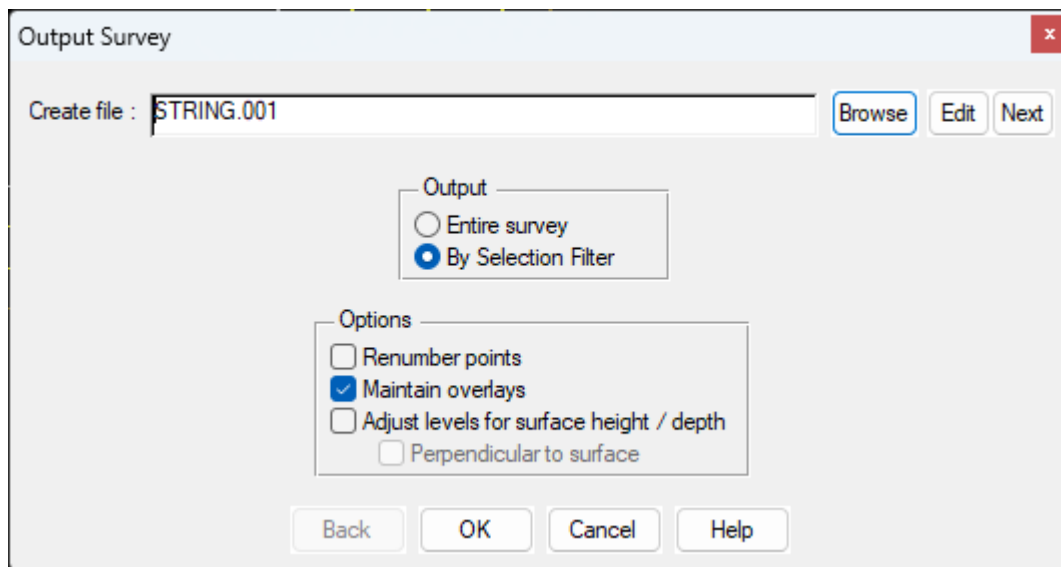


Once we have selected the part of the string, we may get a window to choose the highlighted string or a straight line. We will need to select Highlighted String.

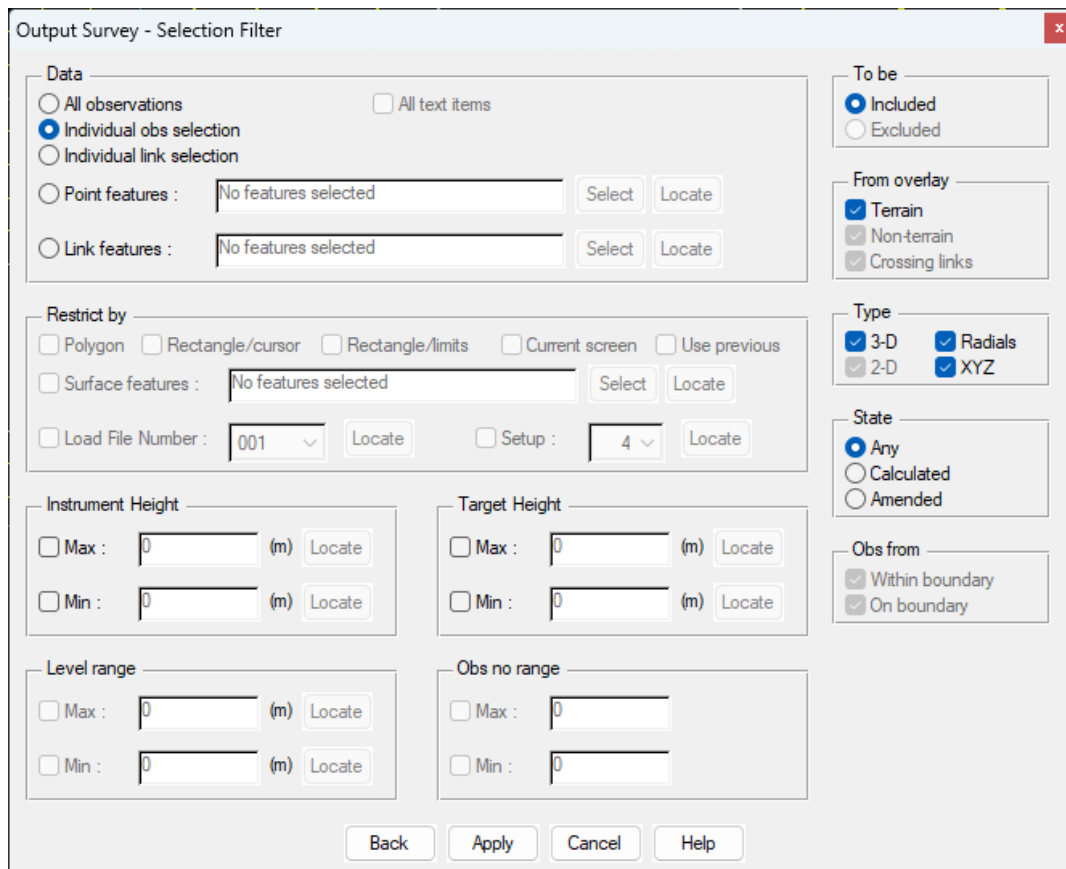
Once selected we can then hit Escape to perform the task and add more points.



Now we need to output selected points to a new LSS load file. So we select the command “Output / Survey”

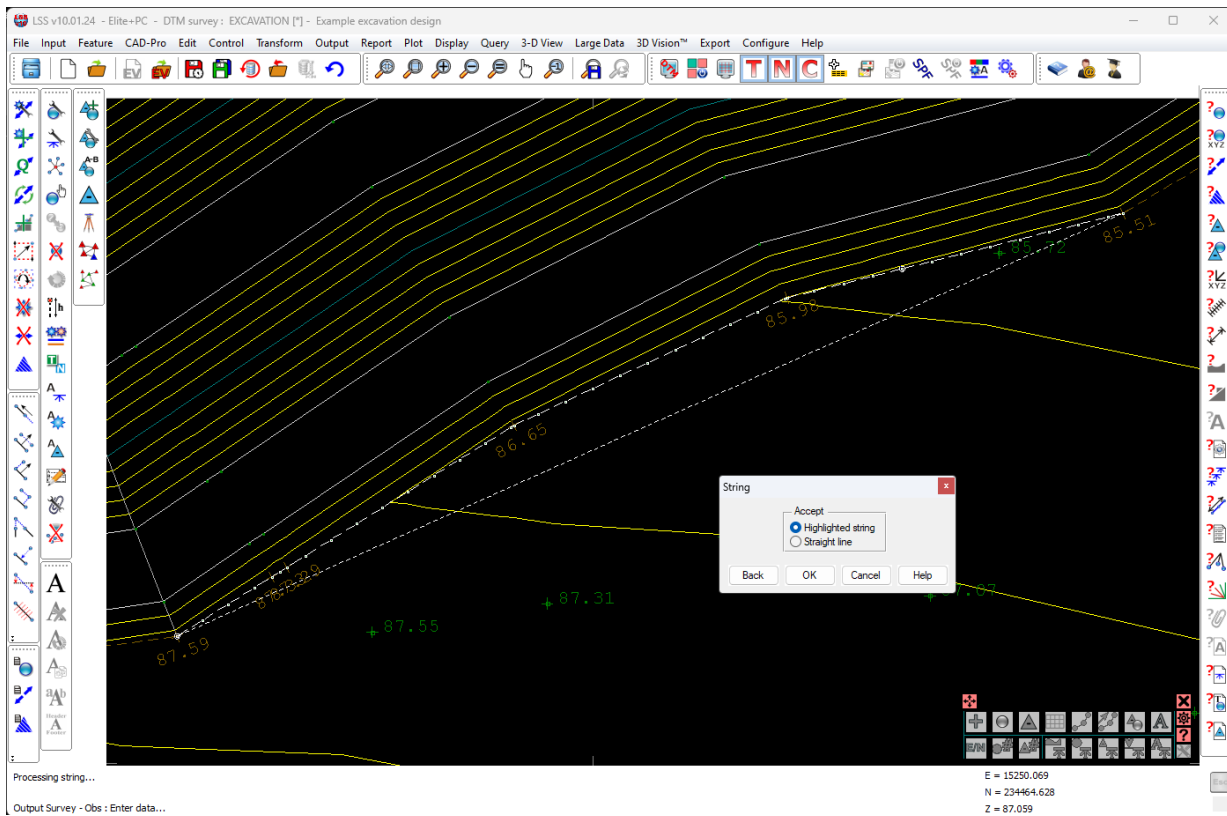


Here we can select the option “By Selection Filter”, as this will enable us to only output selected points from the survey.

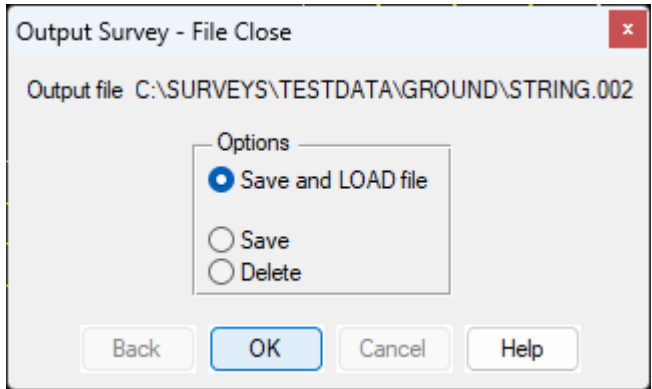


The Selection Filter command window can look quite complex, but don't worry, for this exercise we just need to select the option “Individual Obs selection”, then click “Apply”.

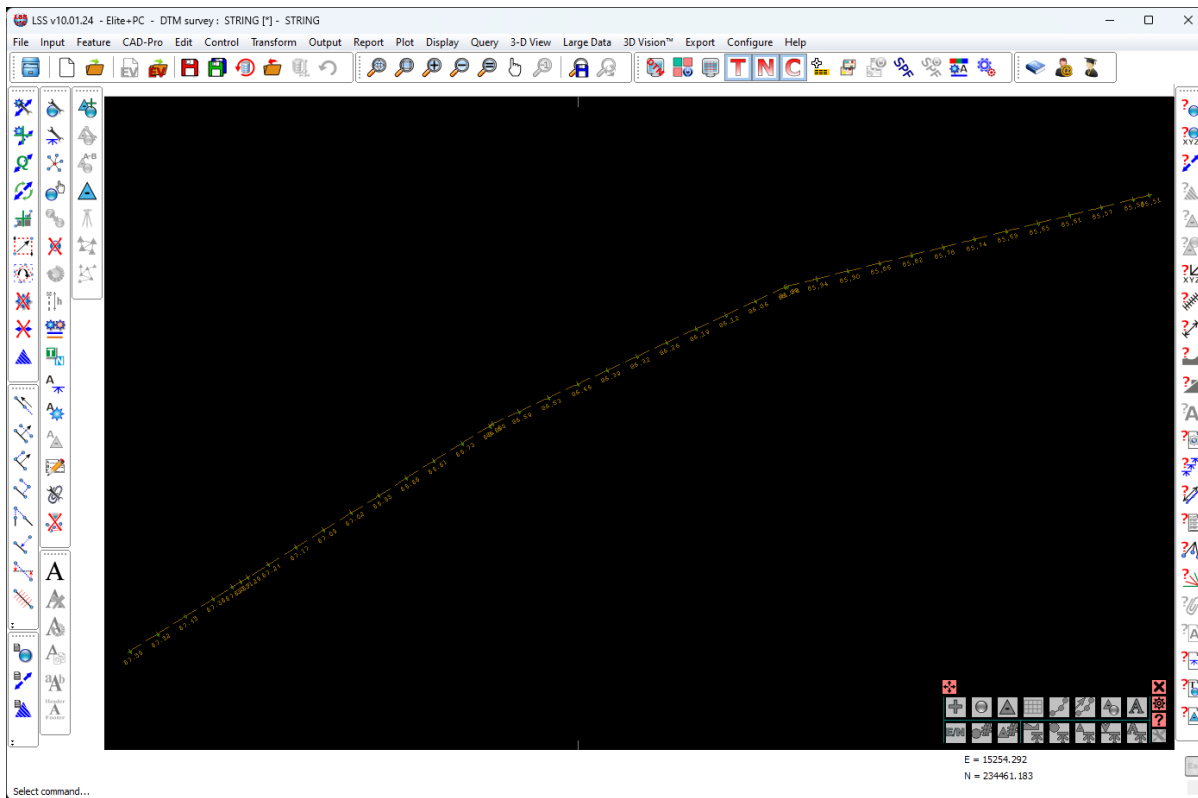
This will enable us to select the “2-point string” MODE and just select the part of the string we are interested in...



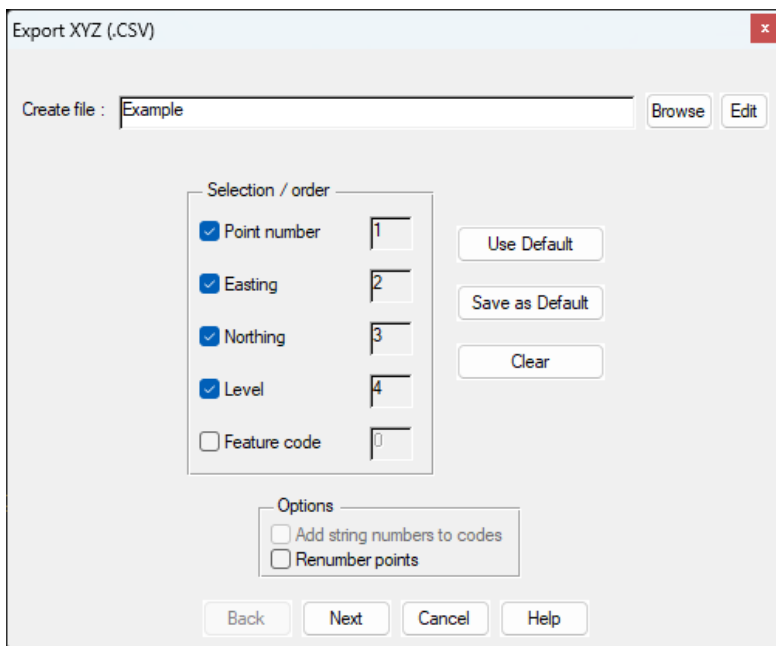
Once done, we will be presented with the Selection Filter window again, but this time we need to click “Finish”



This will take us to the “Save & Load” window. After which LSS takes us through the process of creating the new survey and loading the data in...



Once loaded, we can then use the command “Export / XYZ(CSV)”



We can set what to include and in what order e.g. Point number, Easting, Northing, Level etc..

The Selection Filter will appear, but this time we need to select the option for “All Observations”...

The exported XYA file will look something like this...

Programmer's Notepad - [EXAMPLE.CSV]

File Edit Search View Tools Window Help

Plain Text Find

EXAMPLE.CSV

```
268, 15285.018, 234486.324, 85.505
10033, 15284.030, 234486.075, 85.526
10032, 15282.090, 234485.587, 85.568
10031, 15280.151, 234485.099, 85.610
10030, 15278.211, 234484.611, 85.651
10029, 15276.271, 234484.123, 85.693
10028, 15274.332, 234483.635, 85.735
10027, 15272.392, 234483.147, 85.777
10026, 15270.453, 234482.659, 85.818
10025, 15268.513, 234482.171, 85.860
10024, 15266.574, 234481.683, 85.902
10023, 15264.634, 234481.195, 85.944
274, 15262.848, 234480.745, 85.982
10022, 15262.706, 234480.679, 85.987
10021, 15260.894, 234479.832, 86.055
10020, 15259.082, 234478.985, 86.122
10019, 15257.270, 234478.139, 86.189
10018, 15255.458, 234477.292, 86.256
10017, 15253.646, 234476.445, 86.324
10016, 15251.834, 234475.599, 86.391
10015, 15250.022, 234474.752, 86.458
10014, 15248.210, 234473.905, 86.526
10013, 15246.398, 234473.059, 86.593
280, 15244.804, 234472.314, 86.652
10012, 15244.601, 234472.187, 86.661
10011, 15242.905, 234471.126, 86.733
10010, 15241.210, 234470.065, 86.805
10009, 15239.514, 234469.005, 86.877
10008, 15237.819, 234467.944, 86.949
10007, 15236.123, 234466.883, 87.022
10006, 15234.428, 234465.822, 87.094
10005, 15232.732, 234464.762, 87.166
10004, 15231.037, 234463.701, 87.238
```

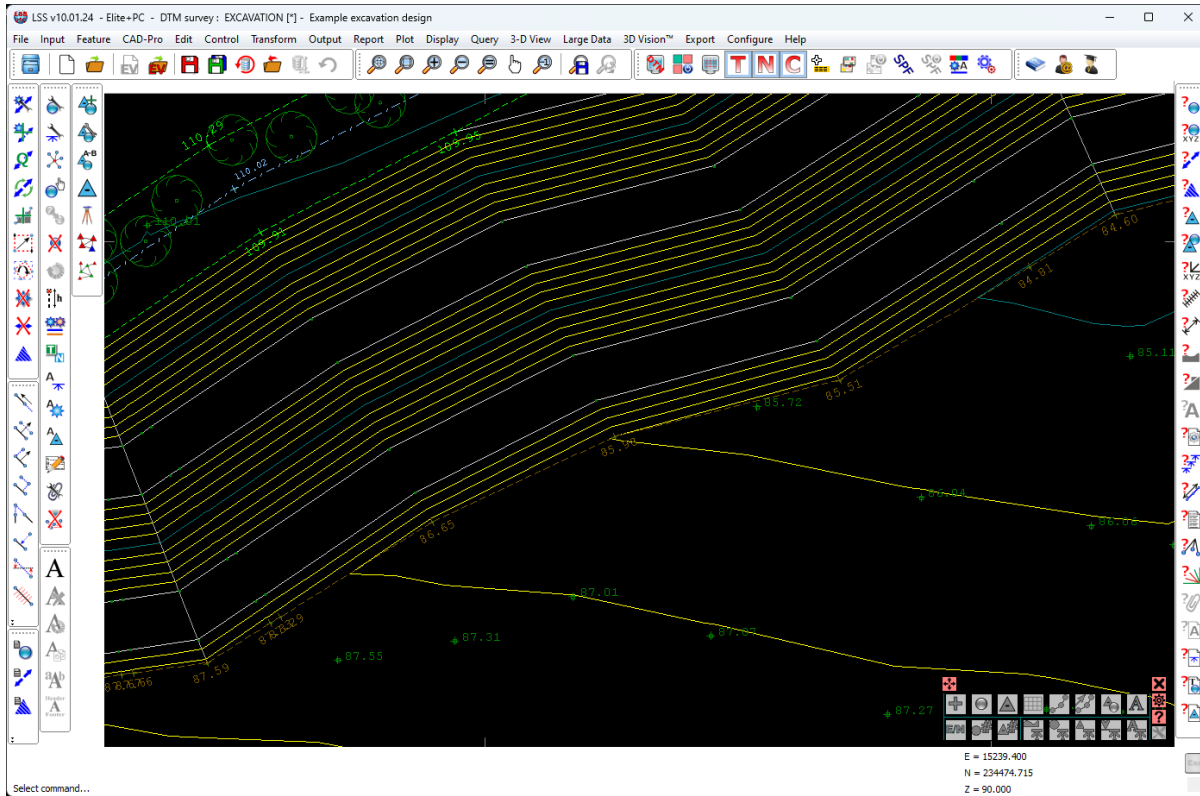
[1:1]: 41      ANSI      CR+LF      INS      Ready

## Method 2

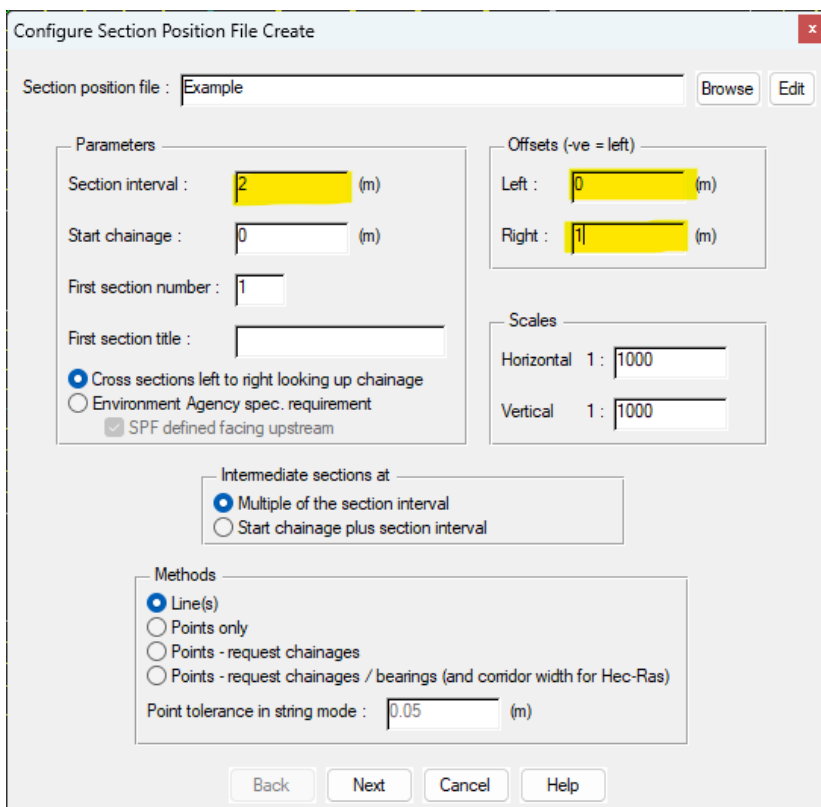
Creating a Section Position File (SPF) to create points at a regular interval.

This method will generate the points at a regular interval, but without firstly adding those points to the existing survey.

Start by opening up the survey...

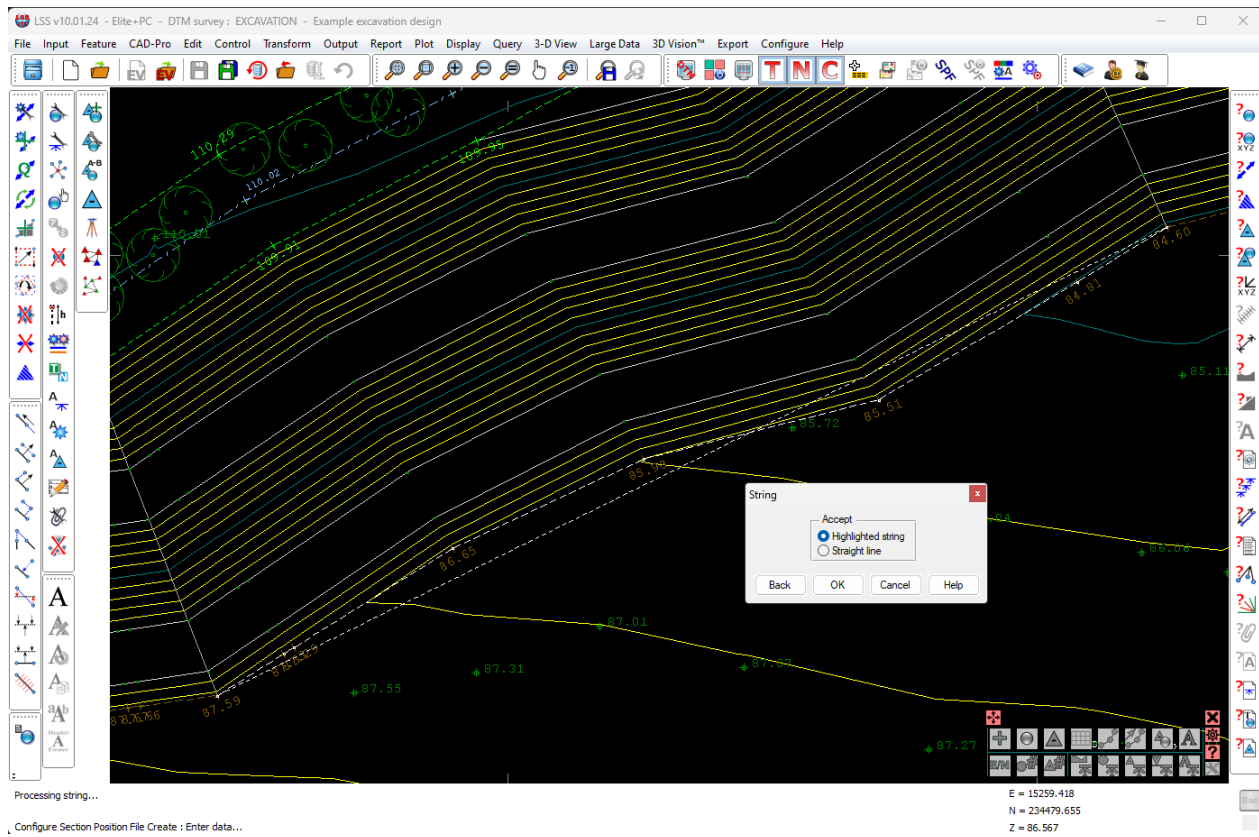


Create a section position file. Choose section interval and offsets.

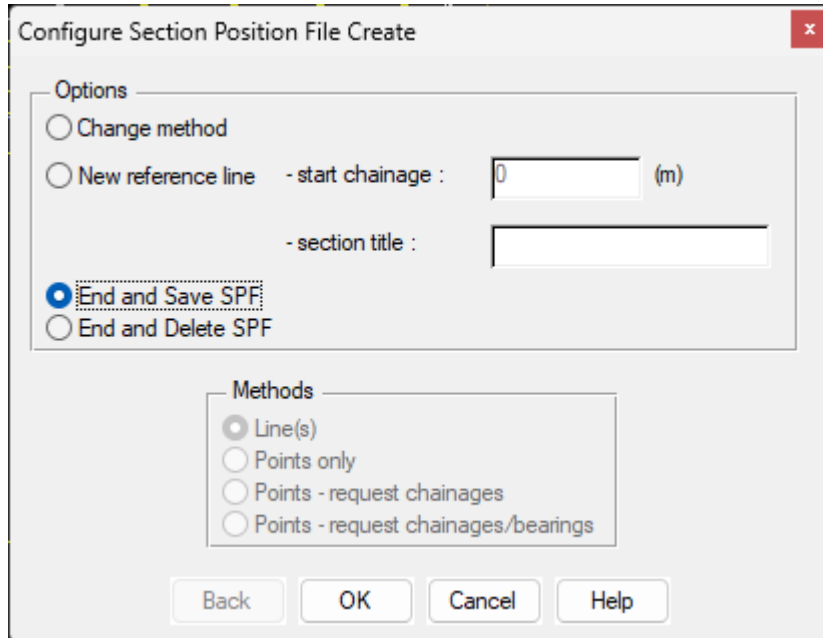




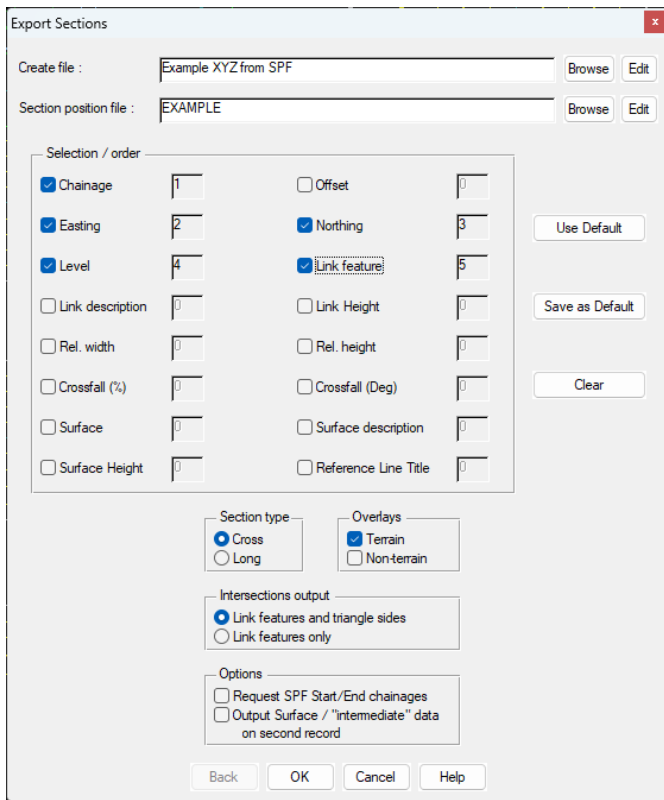
As with the previous method, use the 2-point string MODE to select the string or part of the string to be exported.



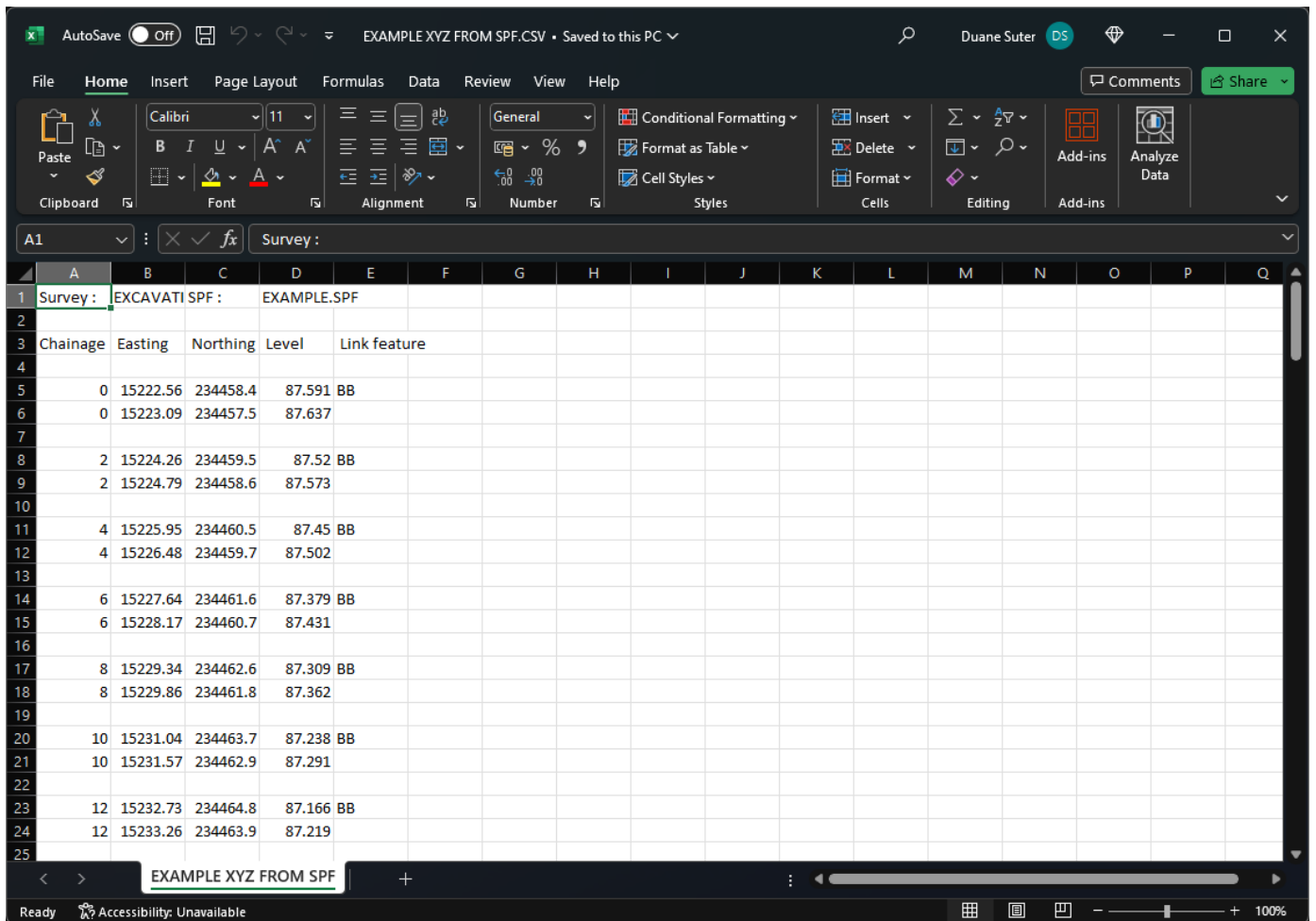
When complete, save the SPF



Then export the data as a CSV file using the command “Export / Sections / User-defined CSV”, choosing which options you require. Here we just choose chainage, X, Y Z and link feature.



This is the file opened up in MS Excel.



If you need further Technical Support, or you wish to attend any training courses please contact us...

**McCarthy Taylor Systems Ltd**

Aerial View  
Acorn House  
Shab Hill  
Birdlip  
Gloucestershire  
GL4 8JX  
Tel 01452 864244

[support@dtmsoftware.com](mailto:support@dtmsoftware.com)  
[www.dtmsoftware.com](http://www.dtmsoftware.com)