



Instrument Interface to



LEICA TPS1100

Configuring a TPS1100 for LSS

The two requirements for using LSS coding to the best advantage are a relevant **code list** and a subset of the **config set** both of which have identical usage for both TPS and GPS.

Code List – An example code list has been built from the LSS prototype legend (supplied with the Testdata) on the LSS CD in the '**support_files\Leica\TPS1100\code_list**' folder.

The following steps explain the method of transferring this code list to the TPS1100;

- 1) Copy the required Code list file **.CRF** from the LSS CD '**Code_list**' folder (as above) to the '**CodeList**' folder on the card.

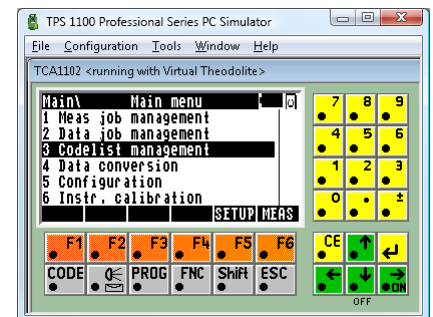
* **Note :** The TPS1100 Simulator card folders are in '*\Program Files\LEICA Geosystems\SurveyOffice\UserTools\TPS1100Tools*'

* **Note :** Transfer the PCMCIA card from your computer to the **TPS1100**.

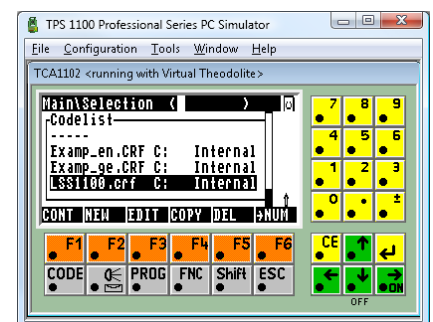
* **Note :** The PCMCIA card must always be "Stopped" before removing it from the PC and the **TPS1100** must always be switched **off** before removing the Compact Flash.

- 2) Select option **3 Codelist management...** from the **Main Menu**.

* **Note :** This option can be selected by pressing the number **3** key, or by navigating to **3 Codelist management...** and pressing the **Enter** key.



- 3) Select **LSS1100.crf...** from the **Codelist**.



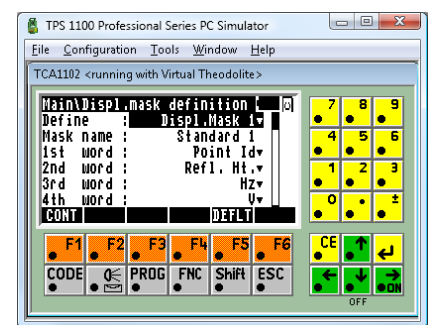
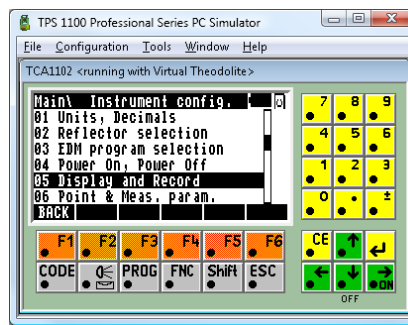
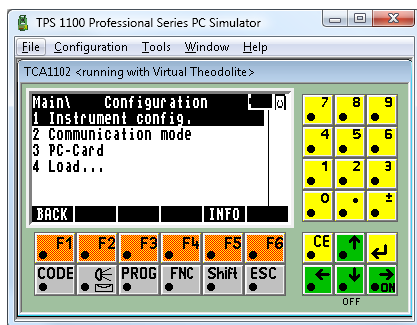
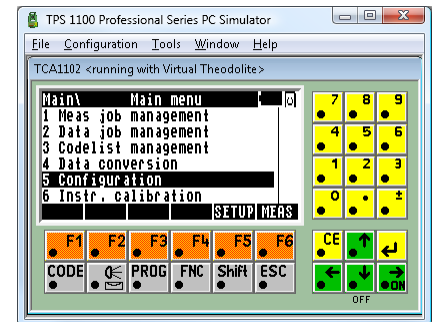
- 4) Press **CONT [F1]** to accept the Codelist.

Config set alterations - This contains all the predetermined settings for a Leica TPS1100 instrument of which the **Display and Record settings** and the **Point and Measure parameters** elements are important to LSS;

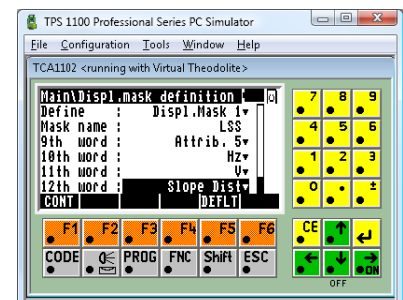
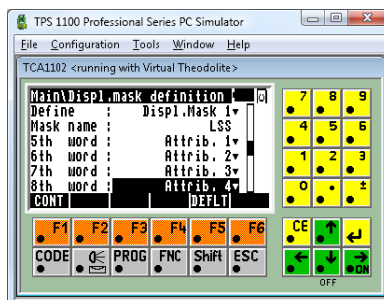
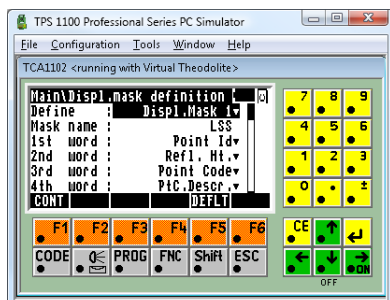
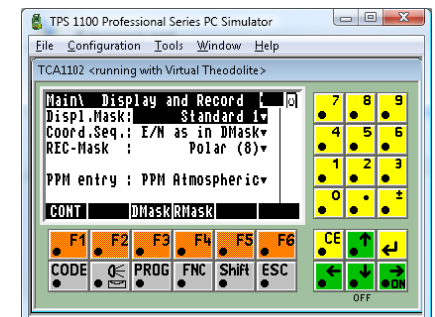
Display and Record masks

The suggested LSS display and record masks show the Code and its description along with up to five associated attributes (as used by the example prototype tree feature PD). They also determine the survey measurements.

To create this display mask choose **5 Configuration...** from the main menu and then **1 Instrument config...** and then **05 Display and record...**

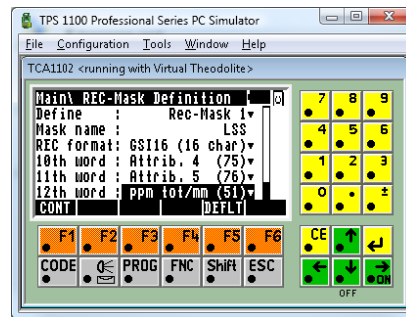
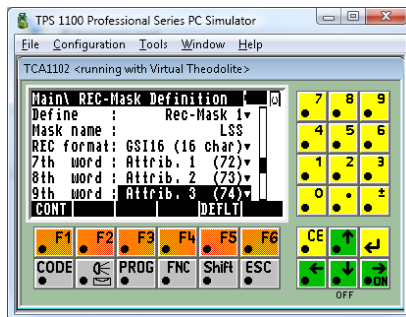
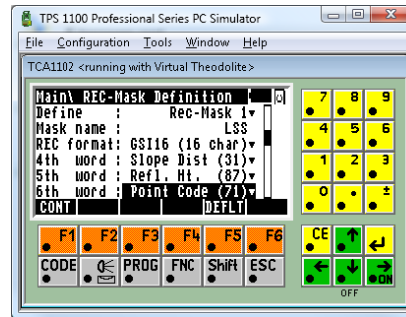
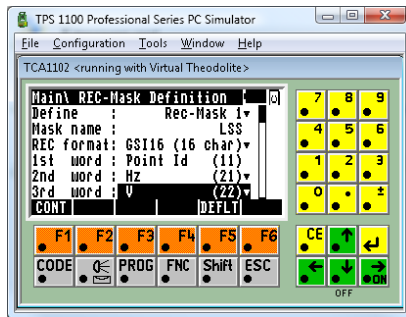


Select the Display mask to use and press **[F3] DMask** then enter the following settings:



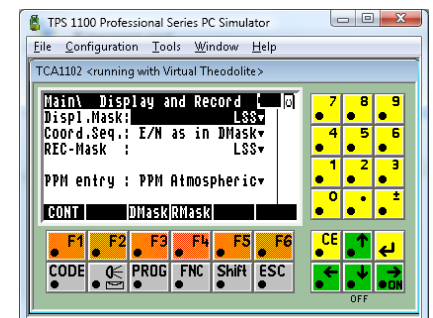
Press **[F1] CONT...**

Similarly select the Record mask to use and press **[F4] RMask** then enter the following settings:



Press **[F1] CONT...**

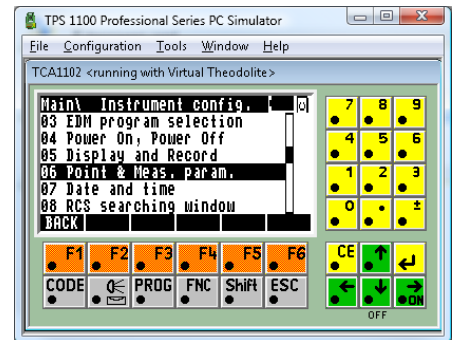
The screen should now appear thus:



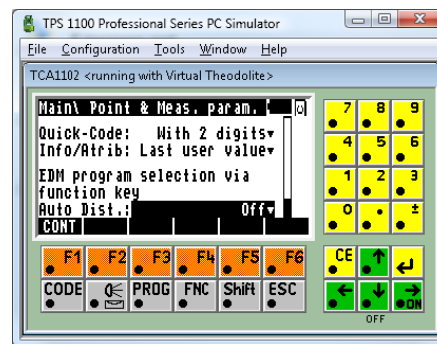
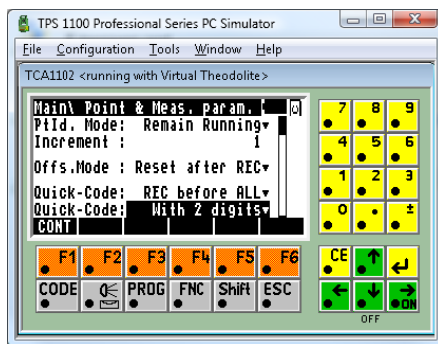
Press **[F1] CONT...**

Point and Measure Parameters

Now select **06 Point & Meas. param...** This is needed for the correct use of the Code list.



Change the setting to the following:



This only relevant for:

1. 'Quick Code' needs to be "Rec before all" and "with 2 digits"
2. 'Info / Attrib' needs to be set to 'Last User Value' means that values added for a feature / string number will be the next default input.

Finally press **[F1]CONT** to confirm settings and **[F1] Back** a couple of times to return the the Main Menu.

Now remember to save your configuration by the following;

From the main menu select "Configuration/Load"

Then "Load System Parameter".

F2 Save and type in a new Par file name and F1 Save will save the instrument current settings to a parameter (par) file.

A Par file can be subsequently loaded onto an instrument to reset it to these settings.