

Server Side: Configuring an LSS network dongle

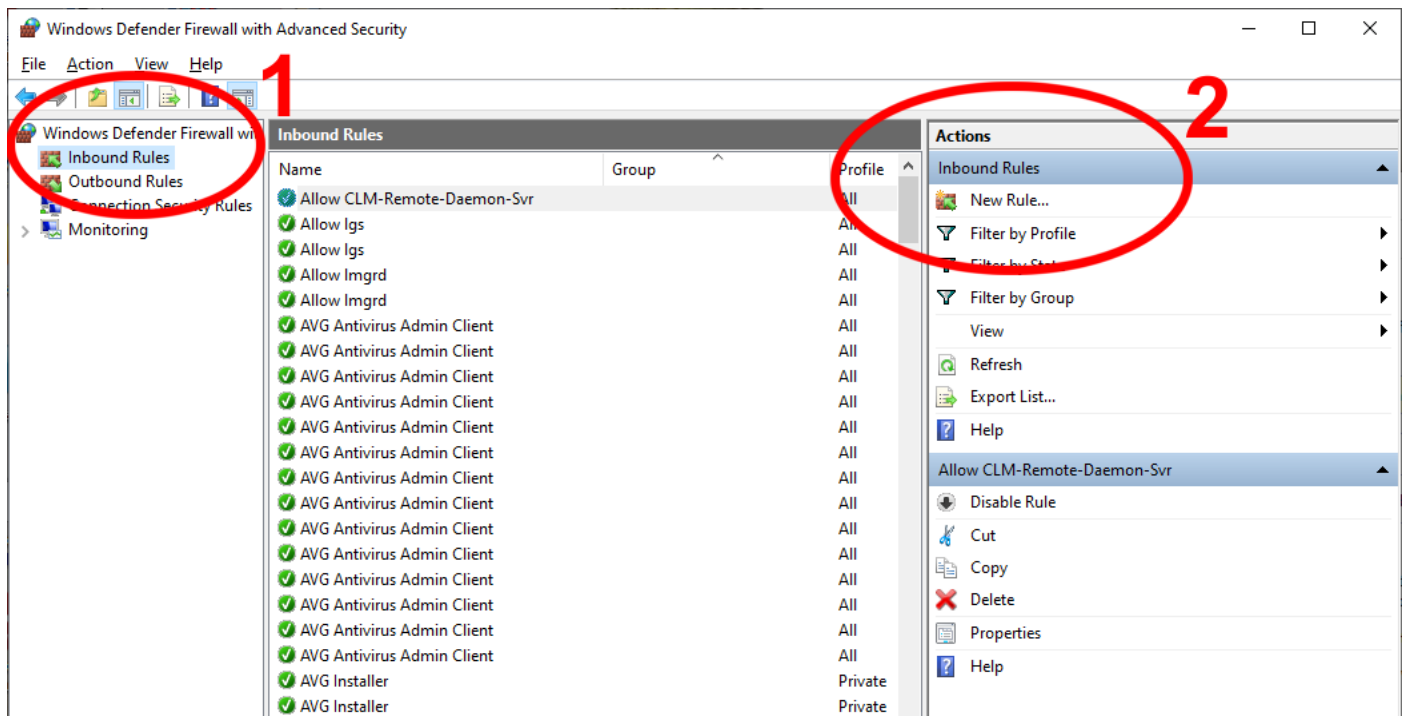
Installing an LSS dongle on a Windows server or PC on your network, for access by a remote worker.

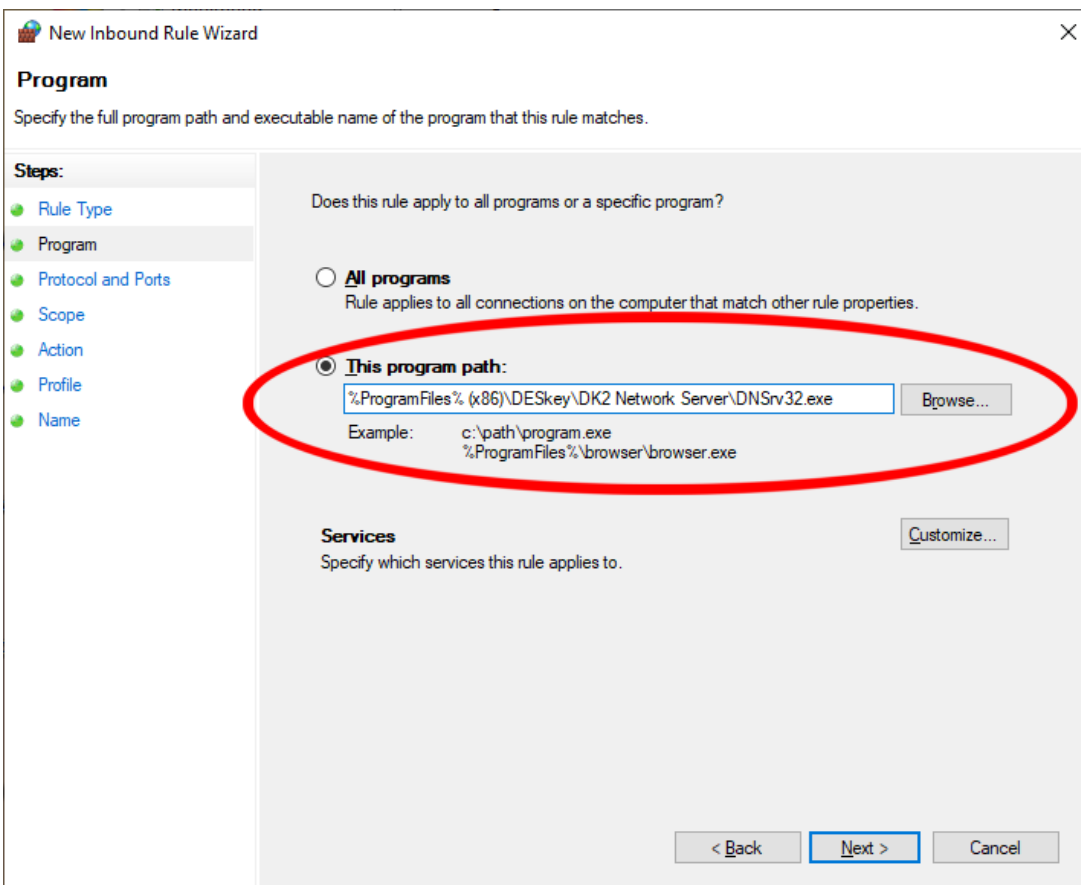
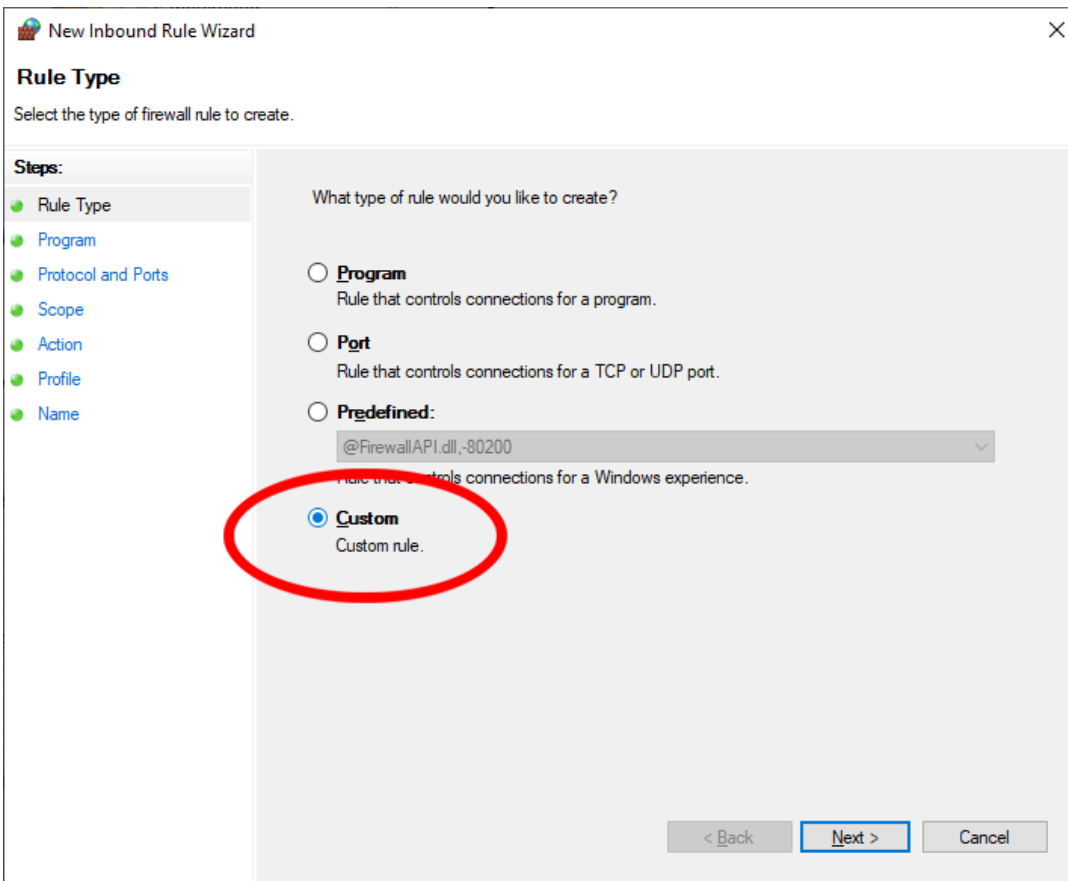
- You will need either a fixed IP address, or a Dynamic DNS address for the location at which the dongle is installed.
- Download and install the LSS Server Dongle drivers. Connect the LSS dongle to a USB port on the server and follow the driver install instructions.
- Make sure that your business internet connection allows the DK2 service to communicate through (usually) port 3029 – this is the default, but as long as the client is accessing the same port then you can choose whichever is best for you.

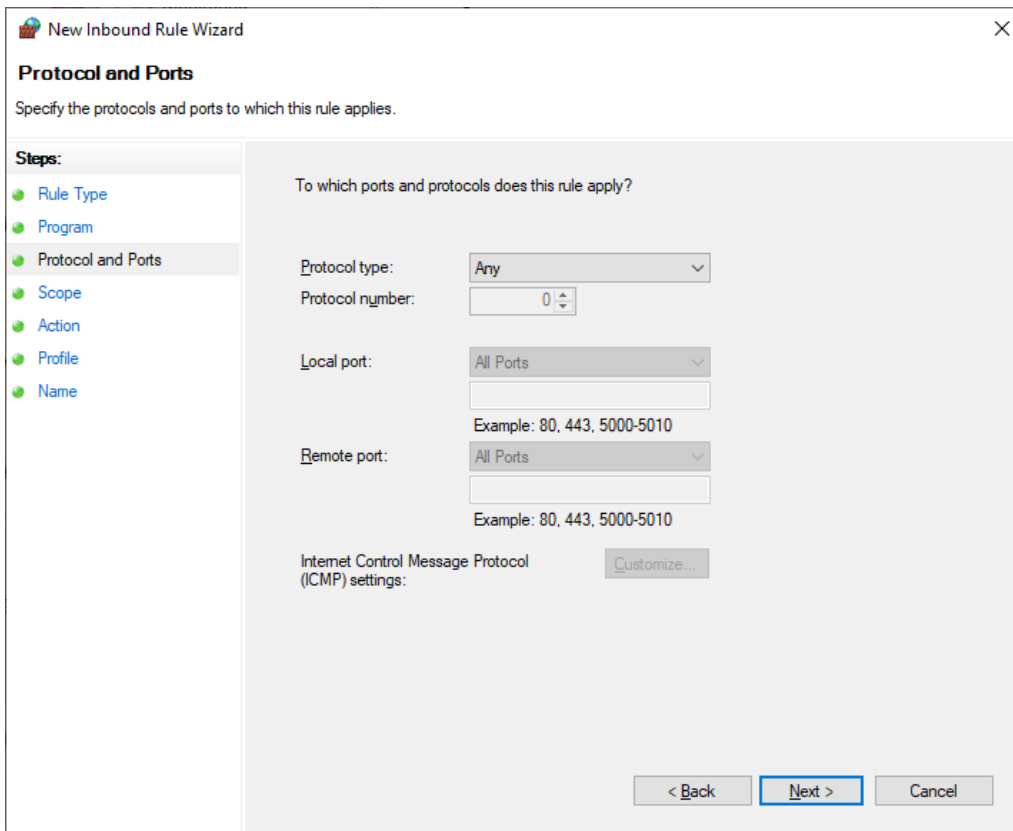
Firewall settings – Windows firewall – for non-IT personnel

In the Windows search field type “Windows firewall” and select the app.

You must create one inbound and one outbound rule to allow the Dongle to communicate within and outside of your organisation







New Inbound Rule Wizard

Protocol and Ports

Specify the protocols and ports to which this rule applies.

Steps:

- Rule Type
- Program
- Protocol and Ports**
- Scope
- Action
- Profile
- Name

To which ports and protocols does this rule apply?

Protocol type:

Protocol number:

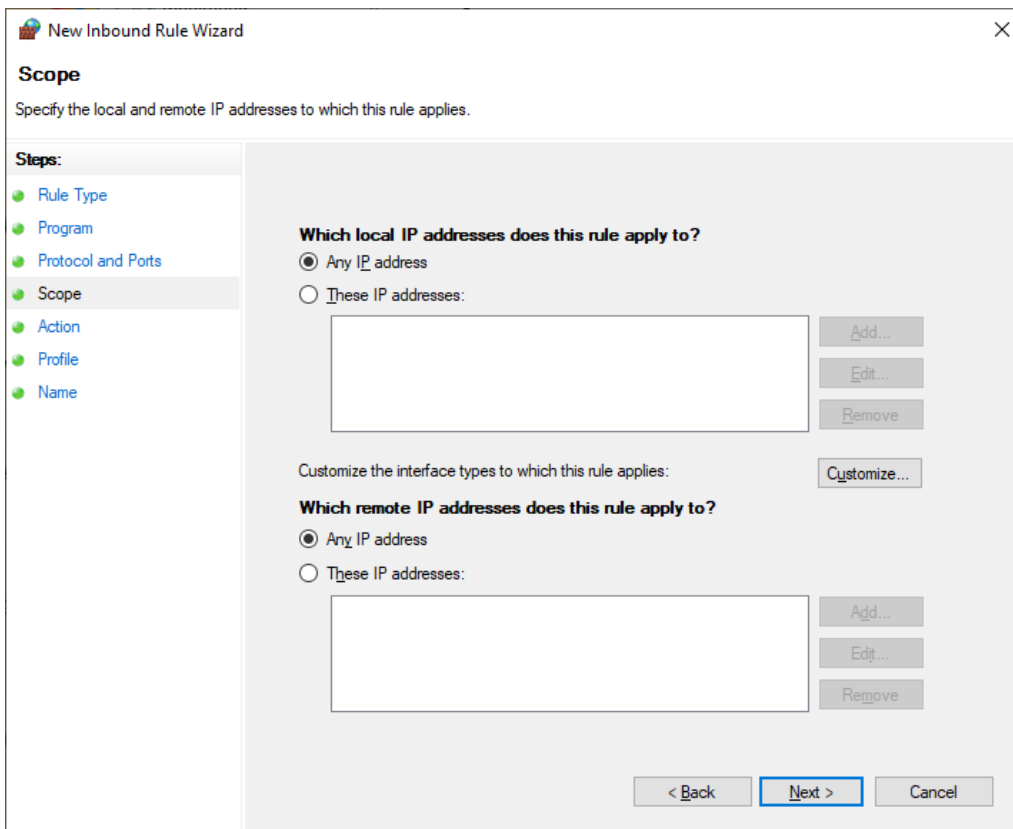
Local port:

Example: 80, 443, 5000-5010

Remote port:

Example: 80, 443, 5000-5010

Internet Control Message Protocol (ICMP) settings:

< Back 

New Inbound Rule Wizard

Scope

Specify the local and remote IP addresses to which this rule applies.

Steps:

- Rule Type
- Program
- Protocol and Ports
- Scope**
- Action
- Profile
- Name

Which local IP addresses does this rule apply to?

Any IP address

These IP addresses:

Customize the interface types to which this rule applies:

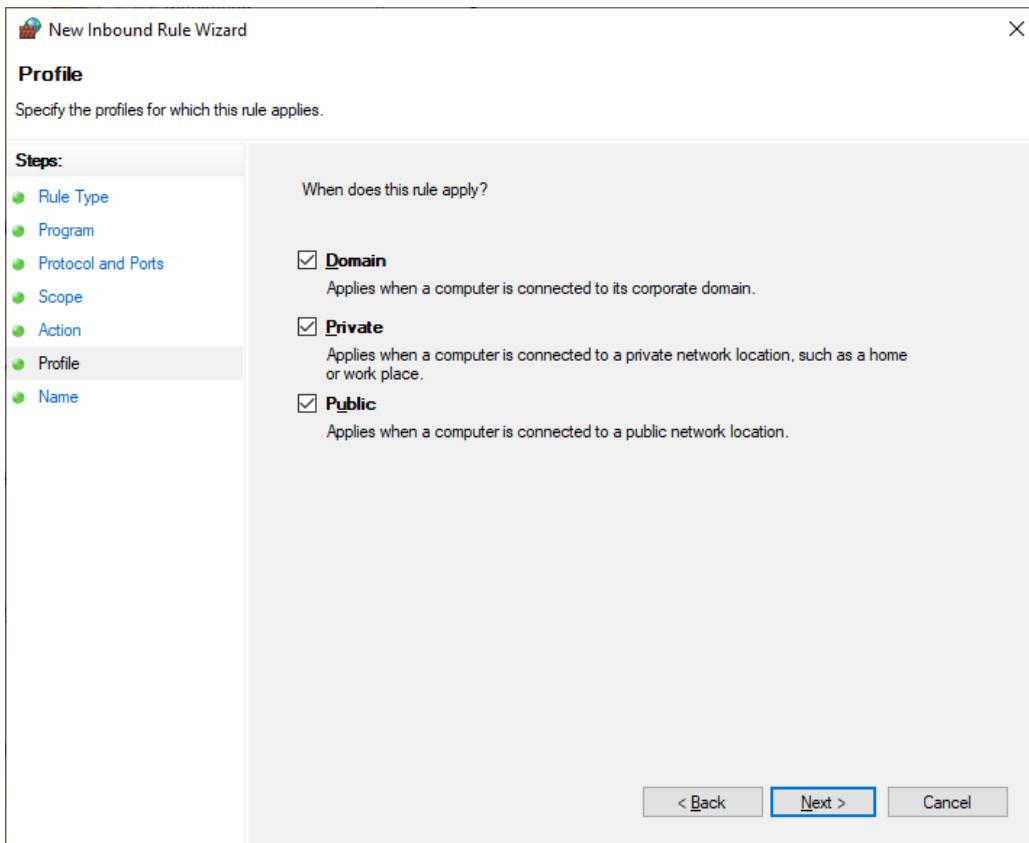
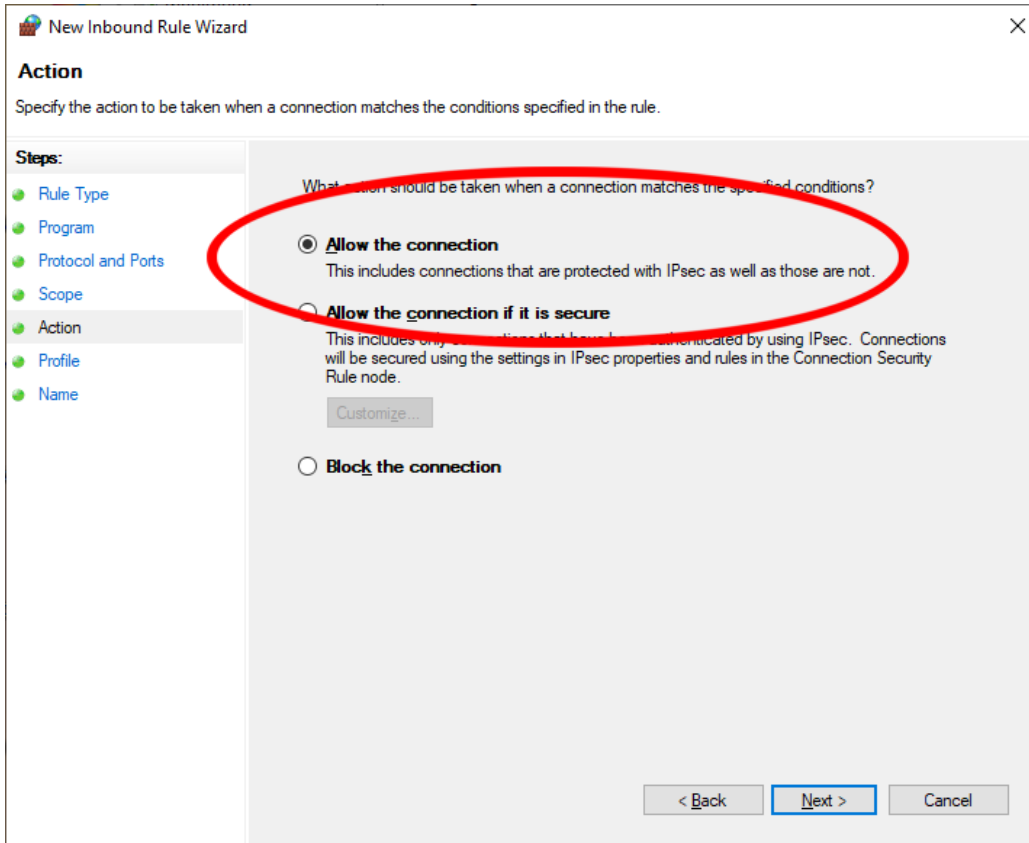
Which remote IP addresses does this rule apply to?

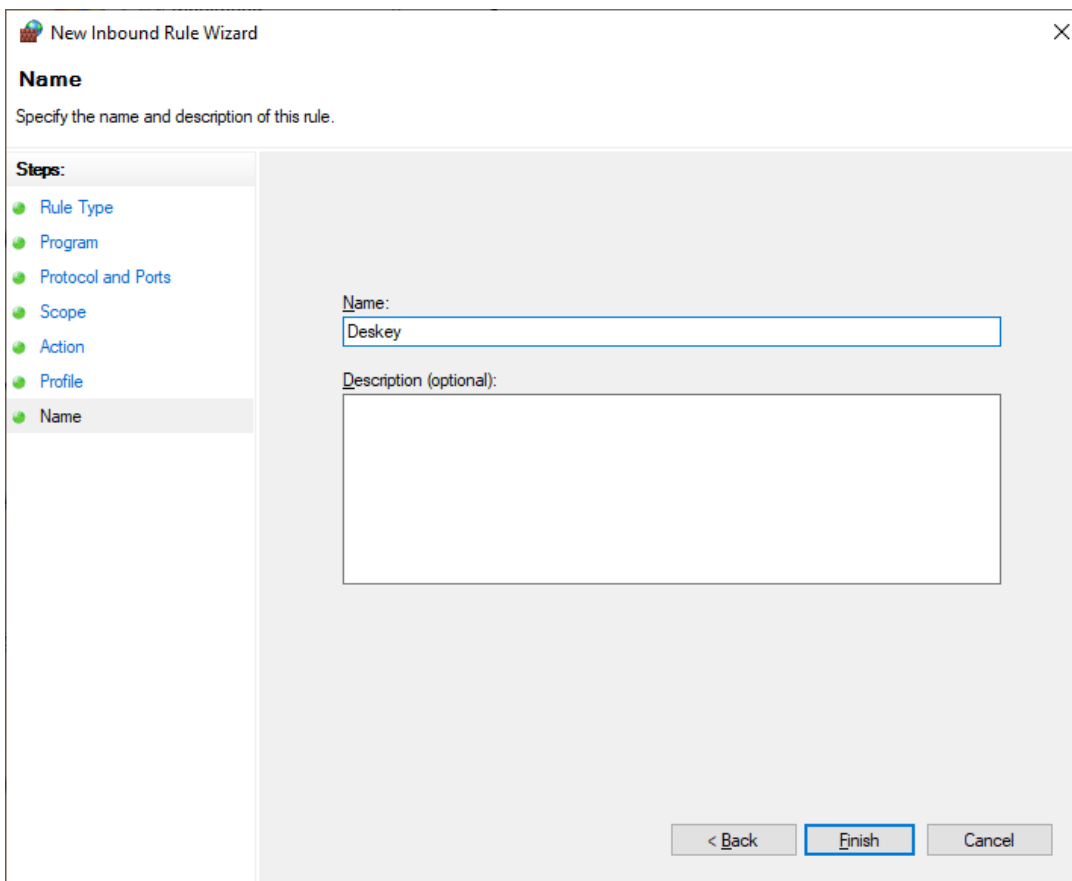
Any IP address

These IP addresses:

< Back

Mar 2021





Repeat the above steps for 'Outbound'.

Firewall settings – Windows firewall – for IT personnel

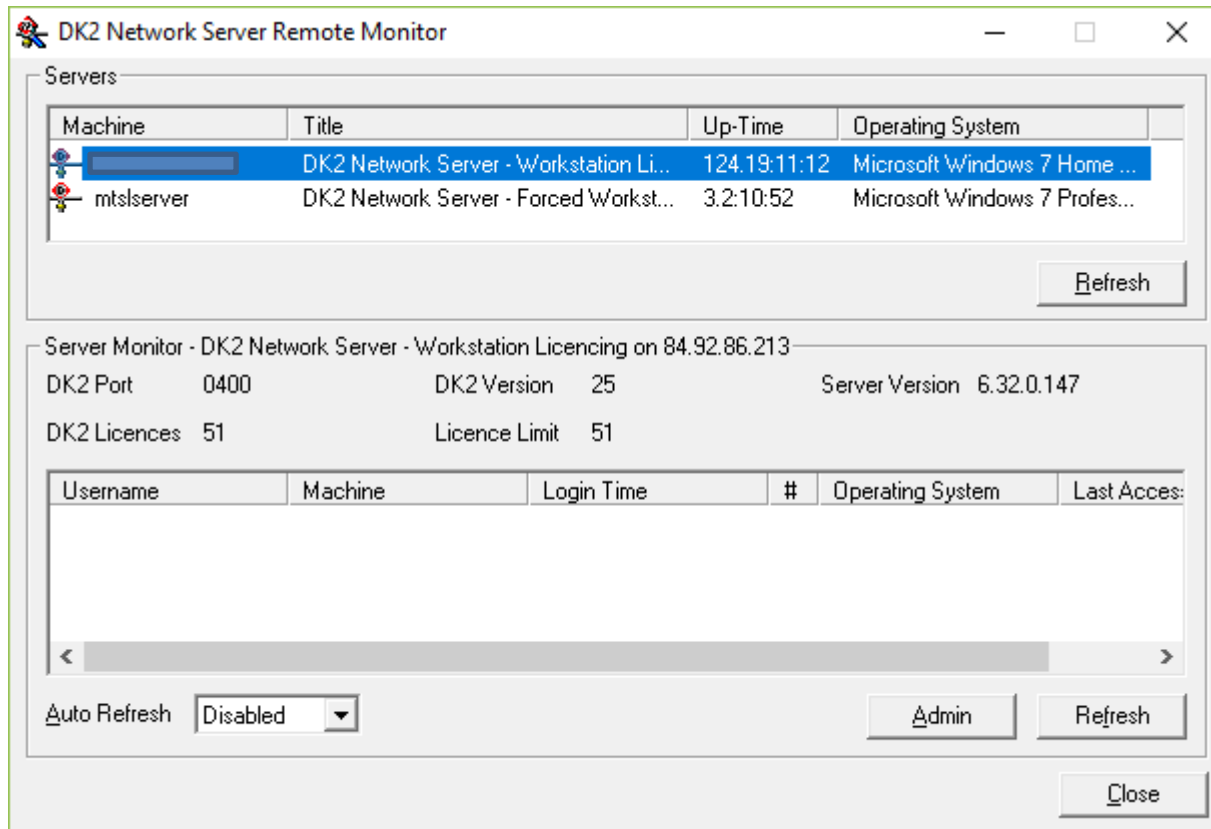
If the DK2 Network Server rules in Windows Defender have already been set then

1. Open Windows Defender Firewall
2. Delete the "DK2 Network Server" rule
3. Open an administrator command line and run : netsh advfirewall firewall add rule name="DK2 Network Server" dir=in action=allow program="C:\Program Files (x86)\DESkey\DK2 Network Server\DNSrv32.exe"

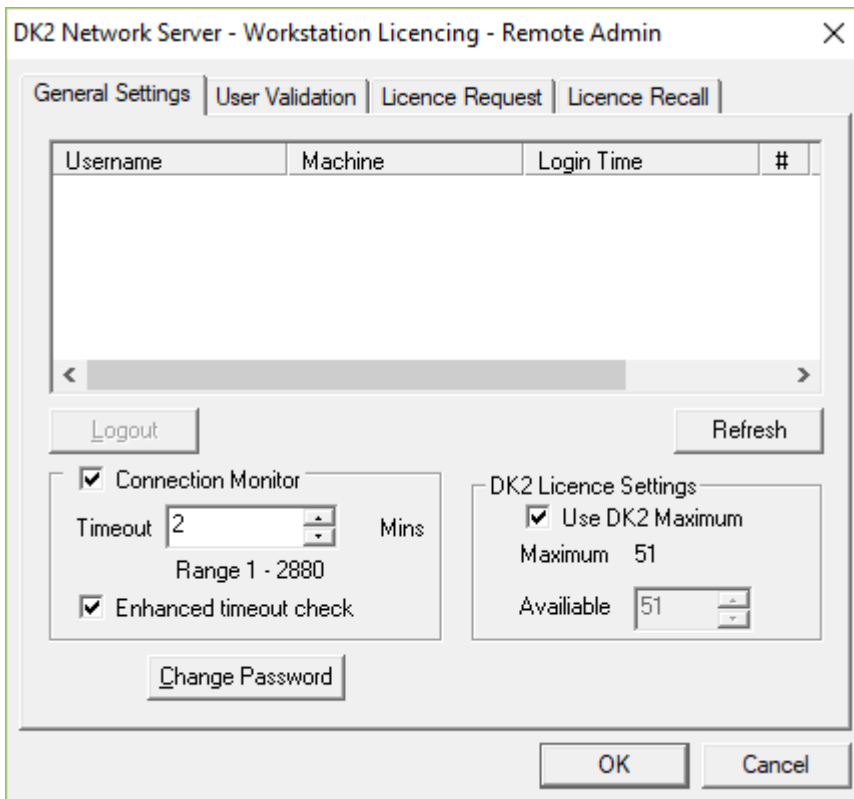
Password Protection access to LSS

If you want to restrict access to registered users only then you need to set up user accounts inside the Deskey driver as follows.

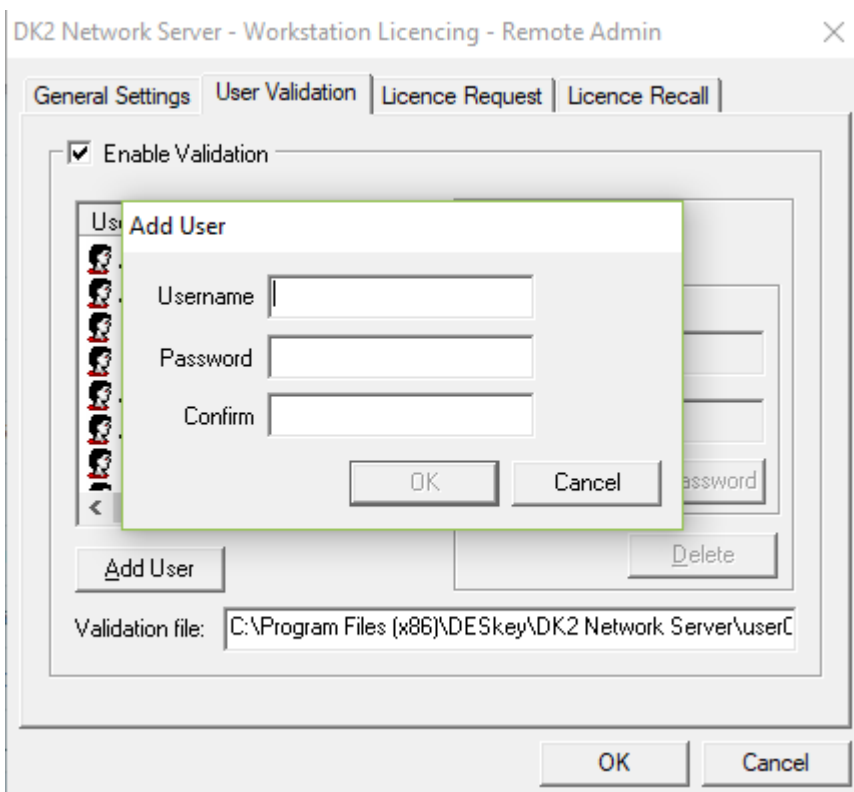
- 1) Run the DK2 Network Server Monitor on the server



- 2) Select the server from the list and hit 'Admin'
- 3) Enter the default password, which is "deskey" (please change this once you are in).
- 4) Make sure that "Connection Monitor" and "Enhanced timeout check" are selected and that the "Timeout" is set to 2 minutes.



5) Add users via the 'User Validation' tab



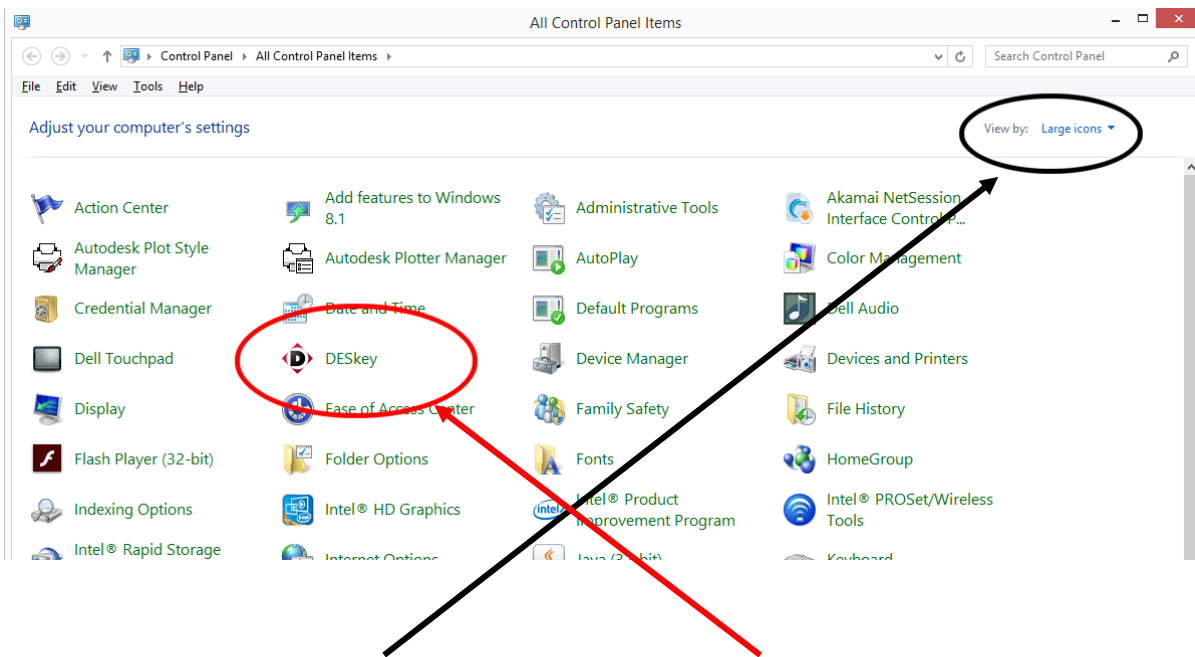
Client Side: Configuring LSS to access a network dongle

- 1) Install LSS and the client dongle drivers. During the dongle install you may be prompted for the location of the LSS dongle. If so, skip to section (5)

Otherwise, to manually configure LSS to use a remote dongle...

- 2) Access Control Panel on your computer. Windows 7 and 8 - Right mouse on the Windows (Start) icon in the lower left of your screen and select 'Control Panel'

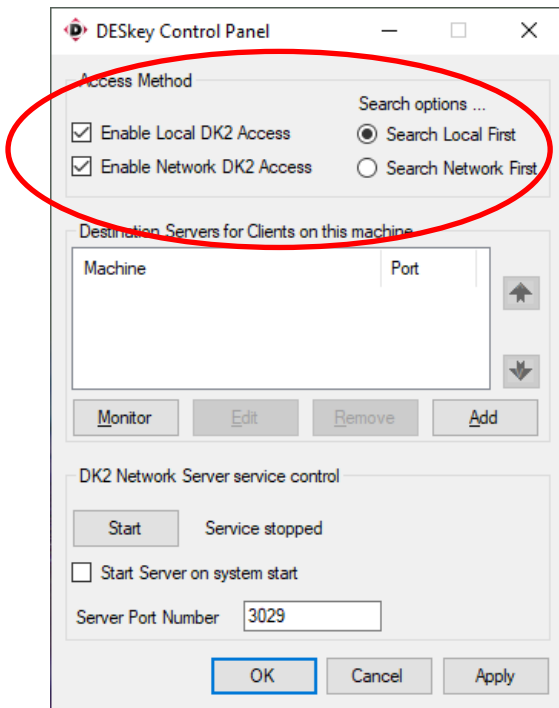
Windows 10 - Either Right Mouse on the Windows (Start) icon in the lower left of your screen and select 'Run' and type 'Control Panel' or select Cortana and type 'Control Panel'



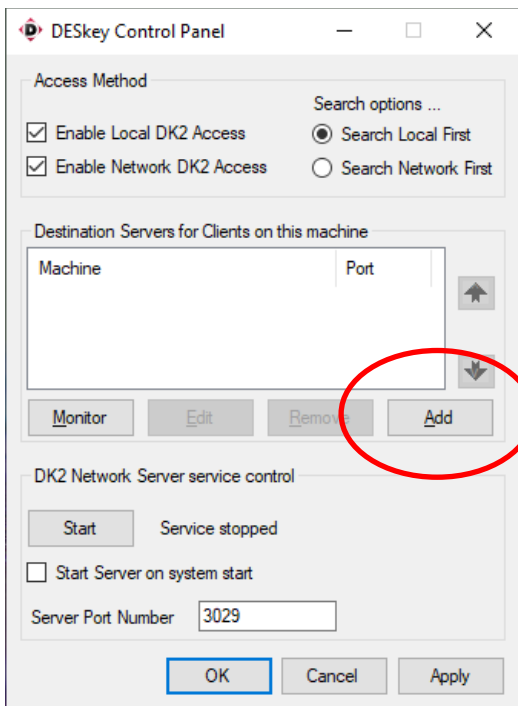
Make sure you select 'View by: large icons' and then select 'Deskey'

Alternatively, for a quick way in, Type "CTRL+R" and then type "dkcpanel.exe". This will take you straight to the Deskey control panel item.

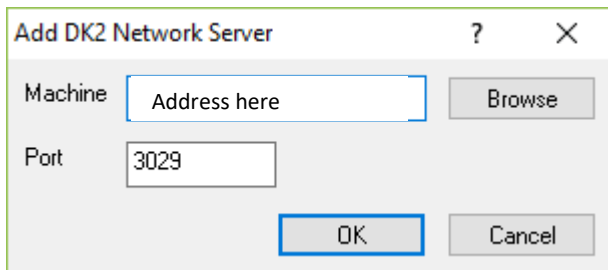
3) Configure the driver as follows...



4) Select the Networking tab and hit 'Add'



5) Enter the server details (either a fixed IP address or a Dynamic DNS address)



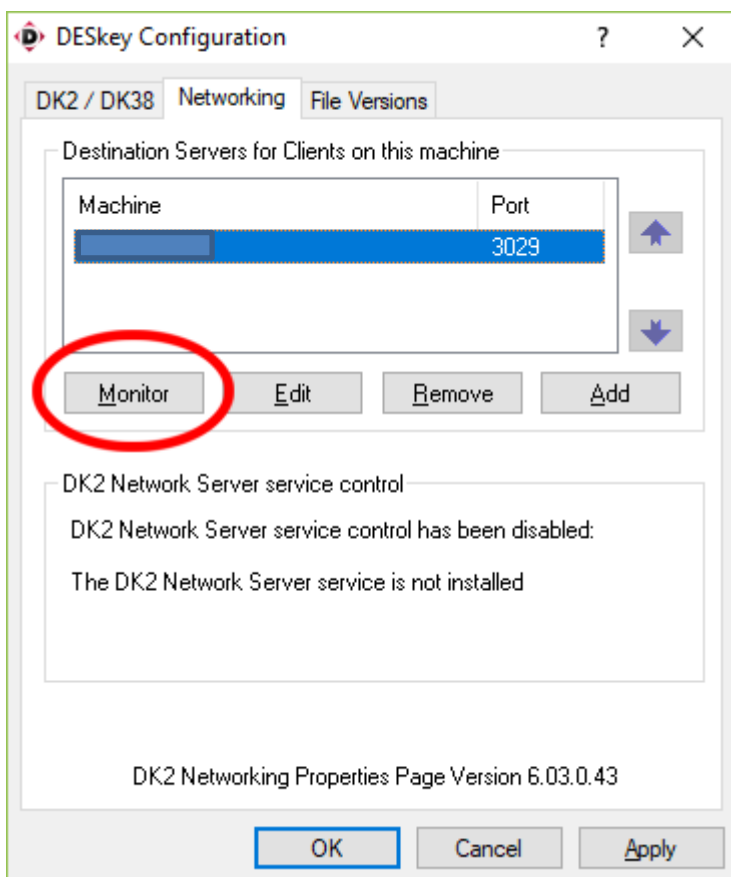
Notes: How to enter a server name which is greater than fifteen characters in length into the "Add DK2 Network Server" 'Machine' field

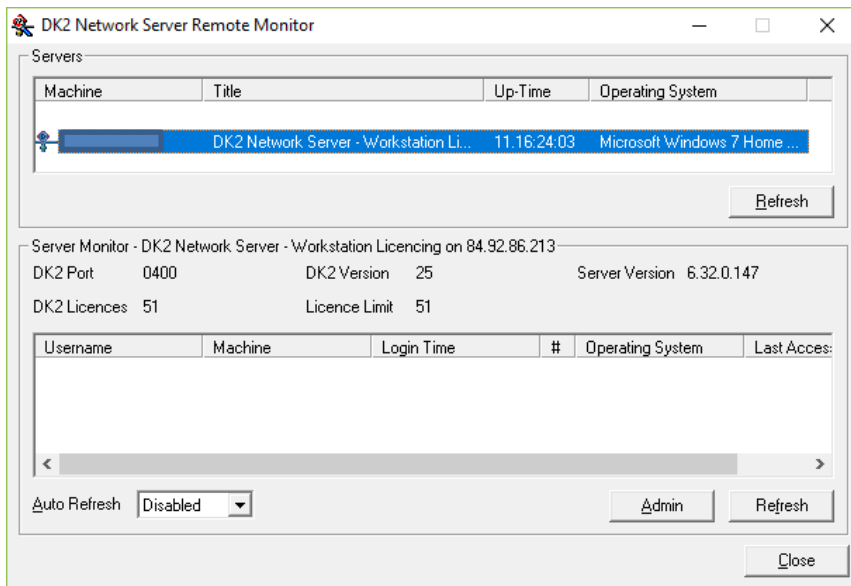
The registry entry can be found at :

64 bit computers : HKEY_LOCAL_MACHINE\SOFTWARE\WOW6432Node\Data Encryption Systems Limited\DESnet\Client\Servers\0000

The value that needs modifying is : machine. This can either contain a machine name or IP address.

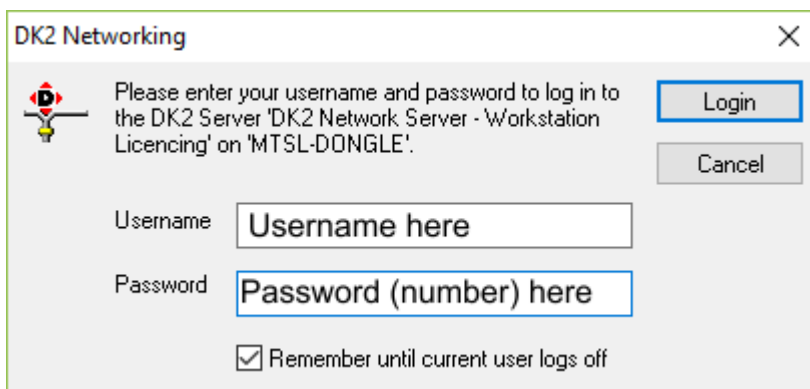
5) Check that your computer has a connection to the dongle server...





If you don't see the server listed then you do not have a connection. This is likely due to your firewall blocking port 3029. Please remove this block (speak to your IT department or advisor).

- 6) Once you have connection to the server you can close the above menu. Now run LSS and you will see a login screen...



Enter the username you have been given (it is case sensitive) and the password.